

DRUMS - LATIN ETUDE

(4 CLICK COUNTOFF - TRACK 6)

PUBLISHED BY KENDOR MUSIC, INC.

REPRODUCED WITH PERMISSION

NUTVILLE

COMPOSED BY HORACE SILVER

ARRANGED BY GREG HOPKINS

BRIGHT LATIN

Musical notation for the 'BRIGHT LATIN' section, consisting of five staves. The first staff has a treble clef and a 4/4 time signature. It contains rhythmic notation with 'x' marks for clicks and bar lines. Above the staff are measures 4, 6, and 8. The second staff has a bass clef and contains rhythmic notation with bar lines. A box with the number '9' is placed above the first measure. The third staff has a treble clef and contains rhythmic notation with bar lines. Above the staff are measures 4, 6, and 8. A box with the letter 'A' is placed above the first measure. The fourth staff has a treble clef and contains rhythmic notation with bar lines. Above the staff are measures 4, 6, and 8. The fifth staff has a treble clef and contains rhythmic notation with bar lines. Above the staff are measures 10, 12, and 14.

SWING

Musical notation for the 'SWING' section, consisting of three staves. The first staff has a treble clef and a 4/4 time signature. It contains rhythmic notation with 'x' marks for clicks and bar lines. The second staff has a treble clef and contains rhythmic notation with bar lines. Above the staff is the word 'LATIN'. A box with the letter 'B' is placed above the first measure. The third staff has a treble clef and contains rhythmic notation with bar lines. Above the staff are measures 6, 8, 10, and 12.

COPYRIGHT © 1965 BY ECAZOH MUSIC, INC.

THIS ARRANGEMENT © 1981 BY ECAZOH MUSIC, INC. - USED BY PERMISSION

INTERNATIONAL COPYRIGHT SECURED - MADE IN U.S.A. - ALL RIGHTS RESERVED

SOLE SELLING AGENT FOR THIS ARRANGEMENT: KENDOR MUSIC, INC., DELEVAN, NY 14042

(44) SWING

LATIN

(G) (TRSS.) +SXS. +TPRS. (5)

p GRAD. CRESC. (10) (12) (14) (16)

(18) (20) (22)

(H) SOLO

SOLO

SOLO

SWING

Musical staff with rhythmic notation (x marks) and repeat signs (%).

LATIN

Musical staff with notes, rests, and repeat signs (%). Includes a circled measure number (4).

Musical staff with notes and repeat signs (%).

Musical staff with notes, rests, and repeat signs (%). Includes circled measure numbers (6) and (10).

Musical staff with notes, rests, and repeat signs (%). Includes circled measure number (12).

SWING

Musical staff with notes, rests, and repeat signs (%).

Musical staff with notes, rests, and repeat signs (%).

LATIN

Musical staff with notes, rests, and repeat signs (%). Includes a circled measure number (1).

SOLO

ENS.

Musical staff with notes, rests, and repeat signs (%).

DRUM STYLES

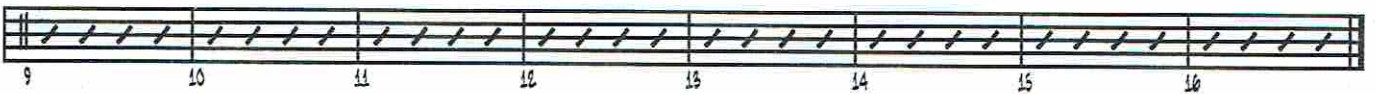
SWING ($\text{♩} = 144$)

1



FUNK ($\text{♩} = 100$)

2



SAMBA ($\text{♩} = 100-120$)

3



UP-TEMPO SWING ($\text{♩} = 160+$)

4

